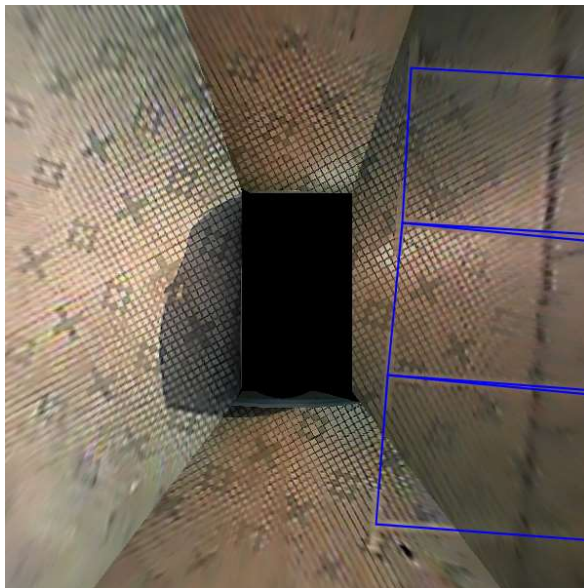
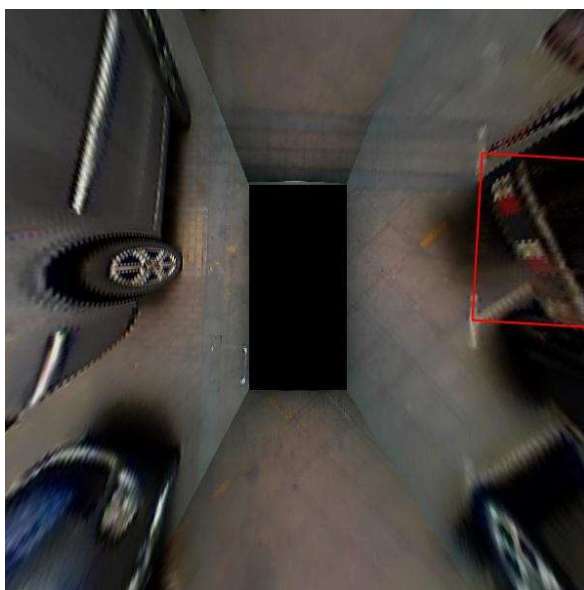


This folder contains matlab codes to detect parking-slots for ps2.0 dataset.

1. The startup program is "processTestImgs.m".
2. It supposes that the testing folder of ps2.0 is at "G:\ps-data\ps2.0\testing\"; if it is not the case for your computer, you need to modify the related dirs in the code.
3. After executing "processTestImgs.m", it will
 - a) store the detected parking-slot information in a mat file, for example "detectResults-all.mat";
 - b) plot the detected parking-slots on the input image and save the image to the folder "results\all"; For example, the following figure shows an image with the detected parking-slots plotted on it;



- c) display the precision and recall rates of the current parking-slot detection algorithm;
- d) plot the false positive parking-slots on the corresponding images and save them to the folder ".\wrongImage". For example, the following figure shows an image with false positive parking-slots detected by the current algorithm;



- e) plot the false negative parking-slots on the corresponding images and save them to the folder “.\missImage”. In other words, these ground-truth parking-slots are not successfully detected by the current algorithm. For example, the following figure shows an image with one missing ground-truth parking-slot.

